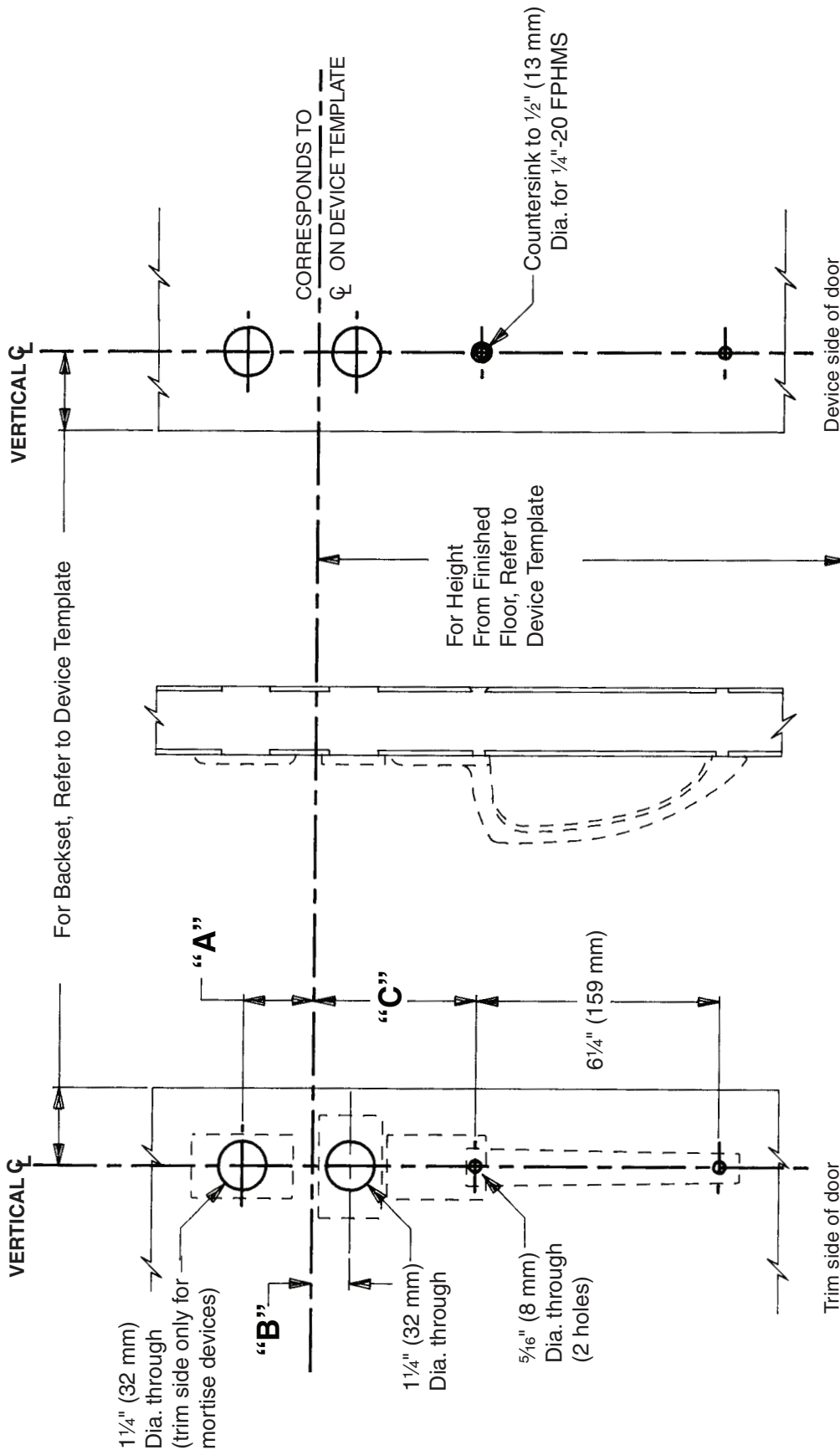


(F)17 and (F)18 Standard Trim

715DT, 815DT/NL, Metal Door, LHR Shown, RHR Opposite



Device	A	B	C
(F)18-M-DT	OMIT	OMIT	4 3/16"
(F)18-M-NL	1 13/16"	OMIT	4 3/16"
(F)18-V-DT	OMIT	OMIT	4 3/16"
(F)18-V-NL	OMIT	3 1/32"	4 3/16"

Device	A	B	C
(F)17-R-DT	OMIT	OMIT	3 1/4"
(F)17-V-DT	OMIT	OMIT	3 1/4"
(F)18-R-DT	OMIT	OMIT	4 3/16"
(F)18-R-NL	1 13/16"	OMIT	4 3/16"

TEMPLATE
T-2001-a