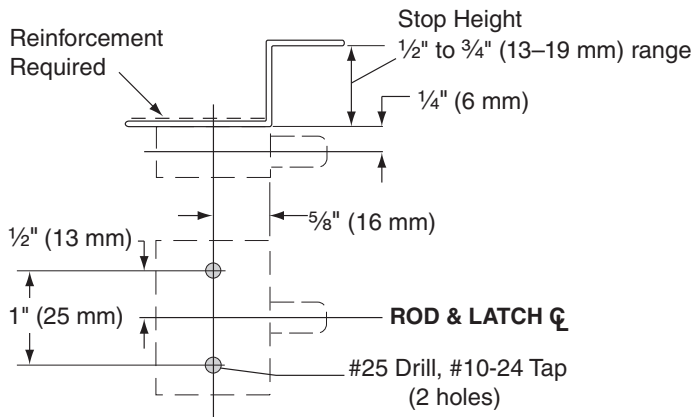
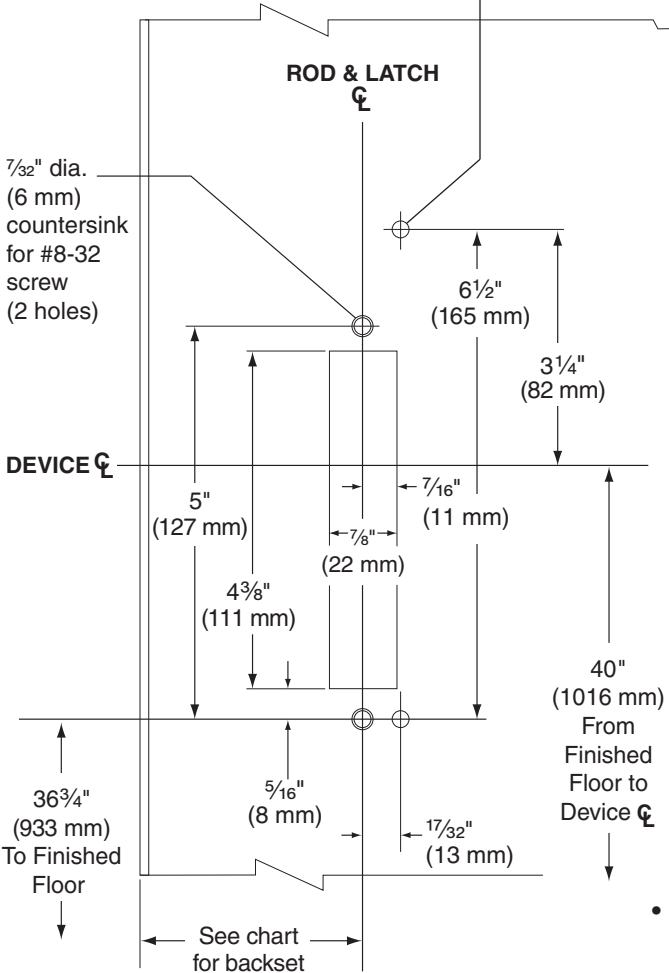


17-C Concealed Vertical Device

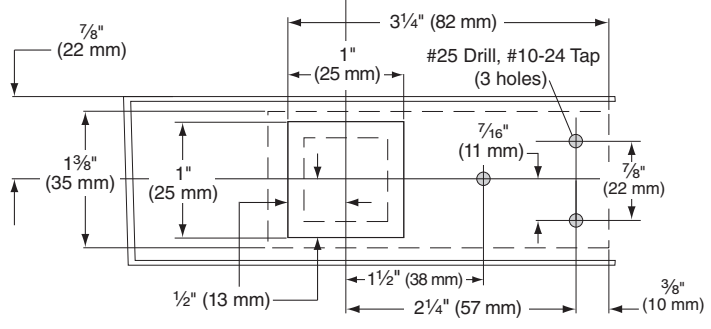
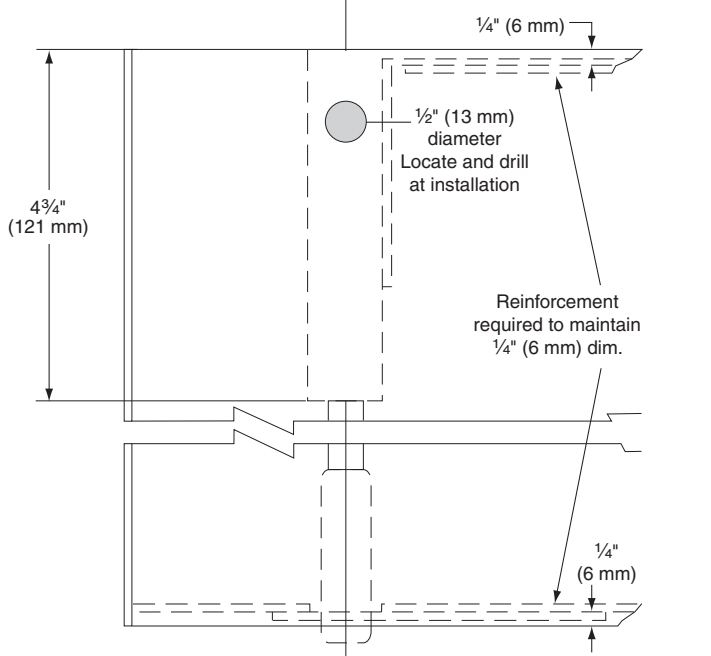
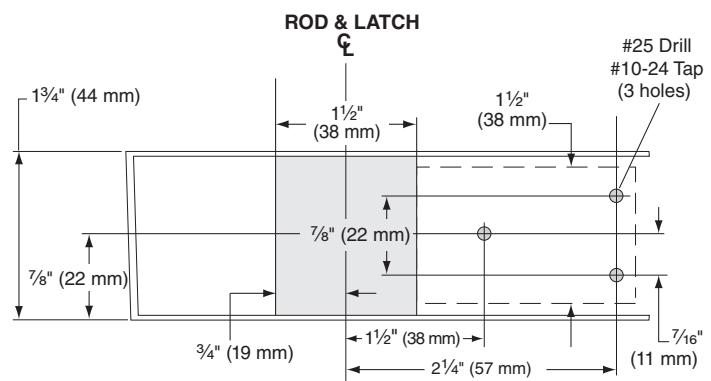
Concealed Vertical Rod Panic Exit Device, Metal Door, LHR Shown, RHR Opposite



- For exit only devices, drill and tap for 1/4" - 20 machine screw (2 places).
- For devices with trim, refer to trim template for door preparation.



Strike	Stile Width	Backset
4188 - N.S.	1 3/4" to 2"	1"
4188	2" to 2 3/8"	1 1/4"
4188	2 3/8" to 4 1/2"	1/2 of Stile
4188	4 1/2" to Flush	3"



- For Less Bottom Rod (LBR) application, omit bottom preparation.
- For outside trim, see trim template for door preparation.
- For sexbolt preparation, refer to Template T-4014.
- See Master Sheet #0100 for suggested reinforcing.

TEMPLATE
T-1141-a